



US ARMY, BERLIN ORGANIZATIONAL CHART

AND DIRECTORY OF KEY PERSONNEL

AP0 742



| LEGEND | |
|--------|-----------------------------|
| ASB-■ | USAB CIRCULAR 320-1 |
| ◆◆◆◆ | STAFF SUPERVISION |
| ■ | CHANNEL FOR BRIGADE MATTERS |
| * | OPERATIONAL CONTROL - PM |
| ** | OPERATIONAL CONTROL - G-3 |
| *** | OPERATIONAL CONTROL - SIG O |
| **** | ADMIN & LOG SUPP-SP TRPS |
| ***** | OPERATIONAL CONTROL - ENG |
| () | INTER COMM SYSTEM NR |

USCOB / BERLIN BRIGADE
STAFF DUTY OFFICER-6531

1 APRIL 1963

OFFICE OF THE US COMMANDER, BERLIN
AND
COMMANDING GENERAL - U.S. ARMY, BERLIN

| | | |
|-------------------------|------------------|-----------|
| MAJ GEN J. H. POLK | USCOB / CO, USAB | 1001 6506 |
| CAPT G. E. TAYLOR | SR AIDE | 1041 6513 |
| LT M. GUGGENHEIMER, JR. | JR AIDE | 1041 6513 |
| MISS M. MURPHY | SECRETARY | 1421 6549 |

| STAFF SECRETARY | | |
|---------------------|-----------------|-----------|
| LT COL E. J. TINARI | STAFF SECRETARY | 1041 6508 |
| MR. S. A. MORASCO | ASST STAFF SEC | 1241 6806 |
| 1ST SGT B. V. WOOD | USAB S/MAJ | 1321 6568 |
| VISITORS BUREAU | | |
| CAPT F. J. SIEBERT | CHIEF | 1071 6933 |
| LT E. E. BAKER | ASST CHIEF | 6826 |
| SP5 J. B. KNAPP | ADM NCO | 6826 |

| CHIEF OF STAFF | | |
|-----------------|----------------|-----------|
| COL T. C. FOOTE | CHIEF OF STAFF | 1021 6505 |

| OFFICE OF THE COMMANDING GENERAL BERLIN BRIGADE | | |
|--|--------------------|-----------|
| BRIG GEN FREDERICK O. HARTL | COMMANDING GENERAL | 1011 6006 |
| CAPT M. F. EASLEY | AIDE DE CAMP | 1001 6013 |
| SP5 K. P. MELLAN | SECRETARY | 6013 |

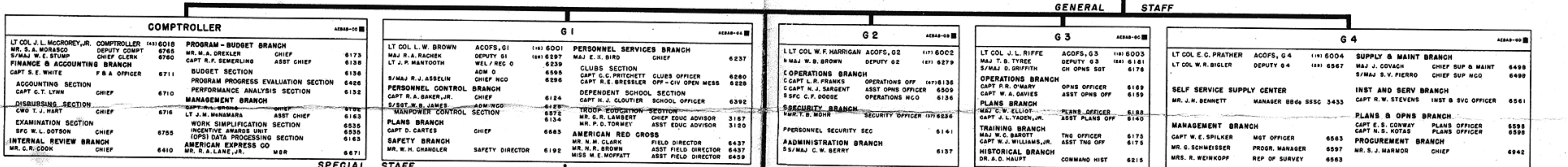
| CHIEF OF STAFF BERLIN BRIGADE | | |
|-------------------------------|----------------|-----------|
| COL L. W. VOGEL | CHIEF OF STAFF | 1001 6005 |

| SECRETARY OF THE GENERAL STAFF | | |
|--------------------------------|--------------------|-----------|
| MAJ J. H. JOHNSON | SEC GEN STAFF | 1101 6423 |
| CAPT J. A. CHERNAULT | ASST SEC GEN STAFF | 1311 6411 |
| S/MAJ R. E. PETERSEN | 9800 S/MAJ | 1311 6449 |

| INTELLIGENCE OFFICER | | |
|----------------------|----------------------|-----------|
| COL G. S. JOHNS | INTEL OFF | 1001 6502 |
| LT COL G. V. SABATHO | DEP INTELLIGENCE OFF | 6504 |
| MAJ J. C. MAPLE | ASST INTEL OFF | 6507 |
| MAJ N. F. HOWARD | ASST INTEL OFF | 6507 |
| CAPT N. T. HARRALSON | ADMIN OFF | 1441 6503 |
| M/SGT J. A. KAY | OPS SGT | 6573 |

| STAFF JUDGE ADVOCATE | | |
|-------------------------|----------------------|-----------|
| COL T. H. SWAN | SJA | 1341 6017 |
| MAJ J. HADJIPIAN | DEPUTY SJA | 6452 |
| SFC H. G. FISHER | CHIEF LEGAL CLERK | 6467 |
| MILITARY JUSTICE BRANCH | | |
| CAPT J. T. GULLASE | CHIEF | 6481 |
| MISS J. P. WEBB | DCM-REPORTER | 6482 |
| CLAIMS BRANCH | | |
| CAPT L. J. BELTMAN | CLAIMS OFFICER | 6484 |
| LEGAL ASSISTANCE BRANCH | | |
| CAPT J. P. SHARKEY | LEGAL ASST OFFICER | 6483 |
| MR. D. H. HAFEMANN | GERMAN LEGAL ADVISOR | 6486 |

| INFORMATION OFFICER | | |
|----------------------------|---------------------|-----------|
| LT COL L. A. BREULT | INFO OFF | 1001 6816 |
| MAJ E. P. ENORES | DEP INFORMATION OFF | 6813 |
| PUBLIC INFORMATION BRANCH | | |
| CAPT R. O'WAYRY | OPNS OFFICER | 6189 |
| MR. J. F. BAHR | CHIEF | 6185 |
| CAPT T. S. BANBRIDGE | SPECIAL PROJ OFF | 6497 |
| COMMUNITY RELATIONS BRANCH | | |
| CAPT J. L. GIBSON | CHIEF | 6809 |
| TROOP INFORMATION BRANCH | | |
| CAPT J. E. DUNN | CHIEF | 6813 |
| MAJ E. P. ENORES | CHIEF | 6813 |
| BERLIN OBSERVER | | 6122 |



| COMPTROLLER | | PROGRAM - BUDGET BRANCH | |
|-----------------------------|---------------|-------------------------|--|
| LT COL J. L. MCCOYREY, JR. | COMPTROLLER | 1431 6018 | |
| MR. S. A. MORASCO | DEPUTY COMPT | 6765 | |
| S/MAJ W. E. STUMP | CHIEF CLERK | 6760 | |
| FINANCE & ACCOUNTING BRANCH | | | |
| CAPT S. E. WHITE | F & A OFFICER | 6711 | |
| ACCOUNTING SECTION | | | |
| CAPT C. T. LYNN | CHIEF | 6710 | |
| DISBURSING SECTION | | | |
| CWO T. J. HART | CHIEF | 6716 | |
| EXAMINATION SECTION | | | |
| SFC W. L. DOTSON | CHIEF | 6755 | |
| INTERNAL REVIEW BRANCH | | | |
| MR. C. R. COOK | CHIEF | 6410 | |

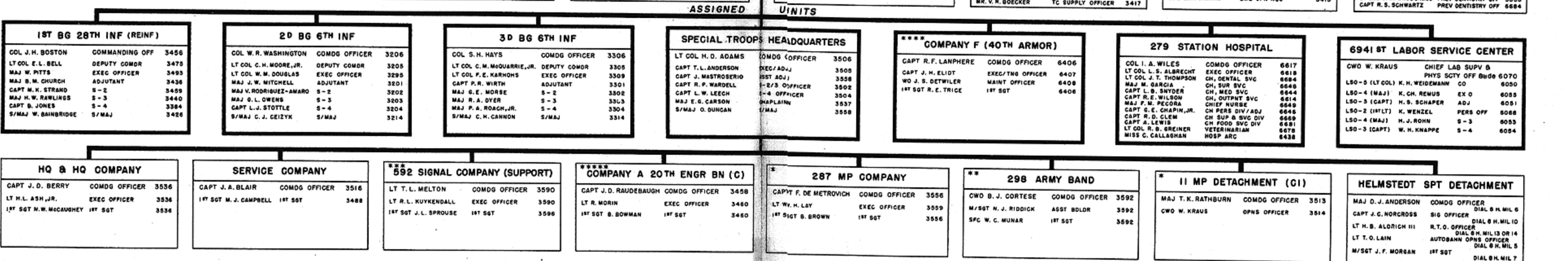
| HEADQUARTERS COMMANDANT | | CHAPLAIN | |
|-------------------------|----------------|-----------|--|
| MAJ F. W. PARKINS | HQ COMMANDANT | 1431 6034 | |
| CWO E. C. COCHRAN | SUPPLY OFFICER | 6433 | |
| MRS. N. KELLER | RECEPTIONIST | 1301 6290 | |

| INSPECTOR GENERAL | | CHAPLAIN | |
|---------------------|--------------------|-----------|--|
| LT COL L. L. PARKER | INSP GEN | 1731 6009 | |
| MAJ R. J. ALLEE | ASST INSPECTOR GEN | 6255 | |

| QUARTERMASTER | | ORDNANCE | |
|----------------------------|--------------------------|----------|--|
| LT COL D. BASILE | COMMAND QM | 3115 | |
| MMAJ P. MARTIN | DEPUTY QM | 3126 | |
| MM/SGT R. D. CRAWER | CHIEF CLERK | 3117 | |
| MANAGEMENT BRANCH | | | |
| M/MAJ F. L. SYKES | CHIEF | 3105 | |
| FFIELD SERVICE BRANCH | | | |
| LT J. C. NIXON | DIG, FIELD SERVICE SHOPS | 3185 | |
| MMR. E. BACHMAN | MECH SHOP SUPV | 3129 | |
| FOOD SERVICE BRANCH | | | |
| CWO G. R. LODGE | FOOD ADVISER | 3194 | |
| LAUNDRY BRANCH | | | |
| LT W. C. PURSCH | LAUNDRY OFFICER | 3517 | |
| MMR. A. E. PAKKO | LAUNDRY SUPV | 3517 | |
| PROPERTY BRANCH | | | |
| MMAJ F. L. SYKES | CHIEF | 3128 | |
| MMR. L. I. FISCHER | ACCOUNTABLE OFFICER | 3128 | |
| LT R. P. YATES | CLASS II & IV OFFICER | 3178 | |
| PROPERTY DISPOSAL BRANCH | | | |
| LT W. C. PURSCH | PROPERTY DISPOSAL OFF | 3174 | |
| INSPECTION & SAFETY BRANCH | | | |
| LT J. C. NIXON | CHIEF | 3157 | |
| SUBSISTENCE BRANCH | | | |
| CAPT A. KROME | CHIEF | 3109 | |
| LT W. A. WITTSCHARD | DIG, COMSY STORE | 6107 | |
| MMR. W. M. HYATT | COMMISSARY OFFICER | 3109 | |
| GLASS VI AGENCY | | | |
| MMR. T. J. WARNER | CLASS VI OFFICER | 6309 | |

| SIGNAL | | ENGINEER | |
|-----------------------------|---------------------|----------|--|
| LT COL A. J. SABEL | SIGNAL OFFICER | 6010 | |
| MAJ D. D. PEIFER | DEPUTY SIG OFF | 6110 | |
| MANAGEMENT BRANCH | | | |
| LT J. L. LEIDENHEIMER | CHIEF | 6357 | |
| SFC S. O. LEFDORF | MGOC, ACTV SUP SEC | 6843 | |
| SYSTEMS CONTROL BRANCH | | | |
| CAPT W. A. LANCASTER | CHIEF | 6310 | |
| CWO J. E. STEPHEN | DIG COMM CTR | 6011 | |
| CWO L. R. NORMINGTON | COMM CTR OFFICER | 6011 | |
| RADIO BRANCH | | | |
| CAPT F. B. MELVIN | CHIEF | 4397 | |
| LT W. J. HURST | FIXED STA RADIO OFF | 6339 | |
| LT R. L. HUYKENDALL | MOBILE RADIO OFF | 3507 | |
| WIRE BRANCH | | | |
| CAPT H. L. ROBERTS | CHIEF | 6311 | |
| MMR. H. TULLY | TECH REP | 6360 | |
| PLANS BRANCH | | | |
| CAPT G. A. HARVEY, JR. | CHIEF | 6315 | |
| PICTORIAL BRANCH | | | |
| CAPT J. J. LACEY | CHIEF | 6210 | |
| SUPPLY & MAINTENANCE BRANCH | | | |
| CAPT J. J. LACEY | CHIEF | 3110 | |
| WO D. E. BAILEY | MAINT OFFICER | 3118 | |
| CHEMICAL | | | |
| MAJ L. A. KOCH | CHEMICAL OFFICER | 3419 | |
| SFC L. R. STARKS | CML OPN NCO | 3418 | |

| SIGNAL | | CHEMICAL | |
|-----------------------------|---------------------|----------|--|
| LT COL A. J. SABEL | SIGNAL OFFICER | 6010 | |
| MAJ D. D. PEIFER | DEPUTY SIG OFF | 6110 | |
| MANAGEMENT BRANCH | | | |
| LT J. L. LEIDENHEIMER | CHIEF | 6357 | |
| SFC S. O. LEFDORF | MGOC, ACTV SUP SEC | 6843 | |
| SYSTEMS CONTROL BRANCH | | | |
| CAPT W. A. LANCASTER | CHIEF | 6310 | |
| CWO J. E. STEPHEN | DIG COMM CTR | 6011 | |
| CWO L. R. NORMINGTON | COMM CTR OFFICER | 6011 | |
| RADIO BRANCH | | | |
| CAPT F. B. MELVIN | CHIEF | 4397 | |
| LT W. J. HURST | FIXED STA RADIO OFF | 6339 | |
| LT R. L. HUYKENDALL | MOBILE RADIO OFF | 3507 | |
| WIRE BRANCH | | | |
| CAPT H. L. ROBERTS | CHIEF | 6311 | |
| MMR. H. TULLY | TECH REP | 6360 | |
| PLANS BRANCH | | | |
| CAPT G. A. HARVEY, JR. | CHIEF | 6315 | |
| PICTORIAL BRANCH | | | |
| CAPT J. J. LACEY | CHIEF | 6210 | |
| SUPPLY & MAINTENANCE BRANCH | | | |
| CAPT J. J. LACEY | CHIEF | 3110 | |
| WO D. E. BAILEY | MAINT OFFICER | 3118 | |
| CHEMICAL | | | |
| MAJ L. A. KOCH | CHEMICAL OFFICER | 3419 | |
| SFC L. R. STARKS | CML OPN NCO | 3418 | |



AGL (1) 4-83-750-94632