



# US ARMY, BERLIN ORGANIZATIONAL CHART AND DIRECTORY OF KEY PERSONNEL APO 742

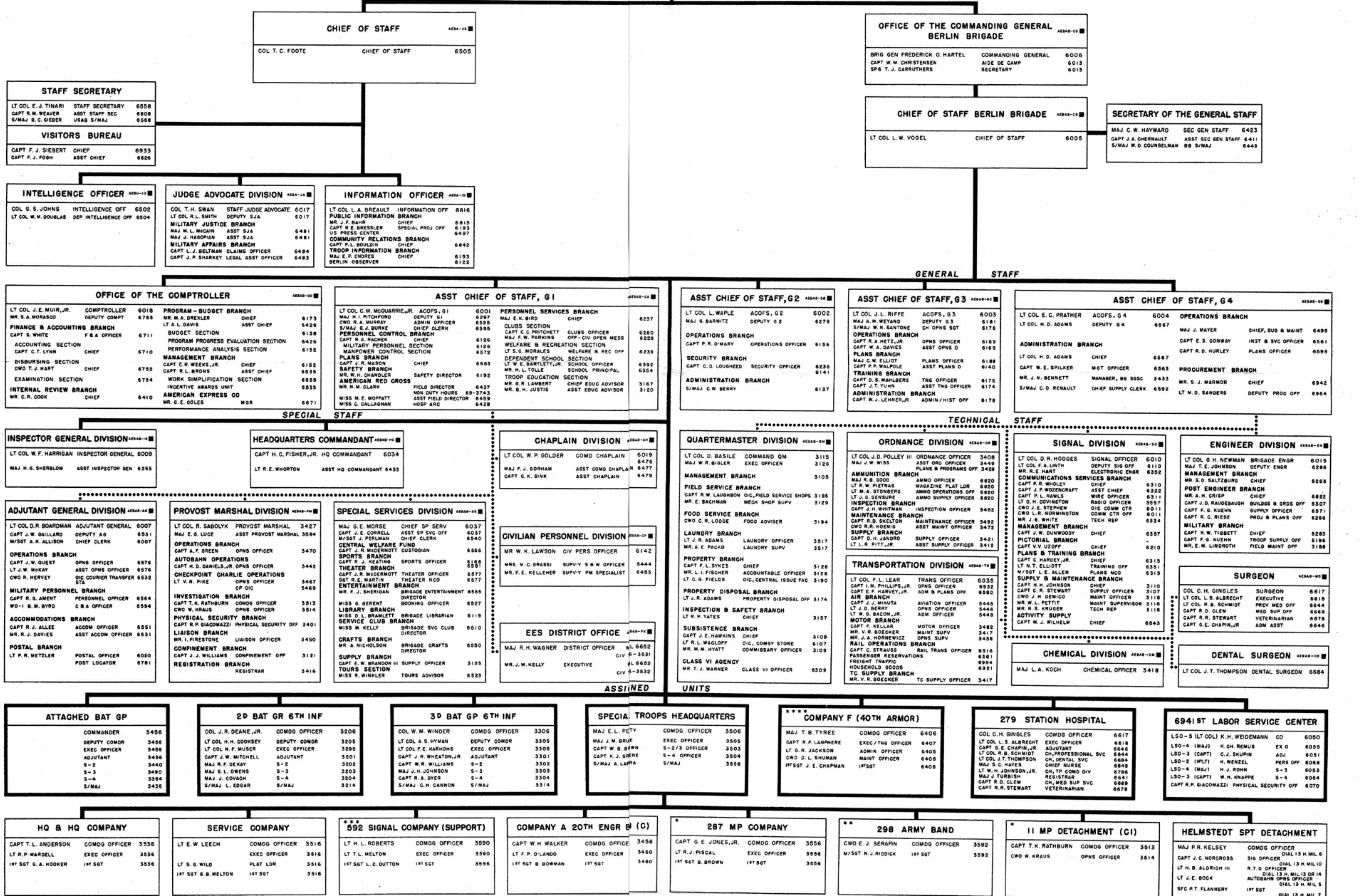


LEGEND	
AEB-1	BdC CIRCULAR 320-1
*****	EXERCISES STAFF SUPERVISION
*	OPERATIONAL CONTROL - FM
**	OPERATIONAL CONTROL - G-3
***	OPERATIONAL CONTROL - SIG O
****	ADMIN & LOG SUPP - SP TRPS

USCOB/BERLIN BRIGADE  
STAFF DUTY OFFICER - 6531

1 FEBRUARY 1962

OFFICE OF THE US COMMANDER, BERLIN AND COMMANDING GENERAL - U.S. ARMY, BERLIN		
MAJ GEN A. WATSON	II	6506
CAPT L. C. REW, JR	SR. AIDE	6513
CAPT H. J. SCHUMACHER	JR. AIDE	6513
MISS M. MURPHY	SECRETARY	6549



PREPARED AND DISTRIBUTED BY:  
THE OFFICE OF THE COMPTROLLER

IDEAS FOR IMPROVEMENTS IN OPERATIONS, EFFICIENCY, OR SAFETY PHONE 6535

AGL (1) 3-82-550-87908